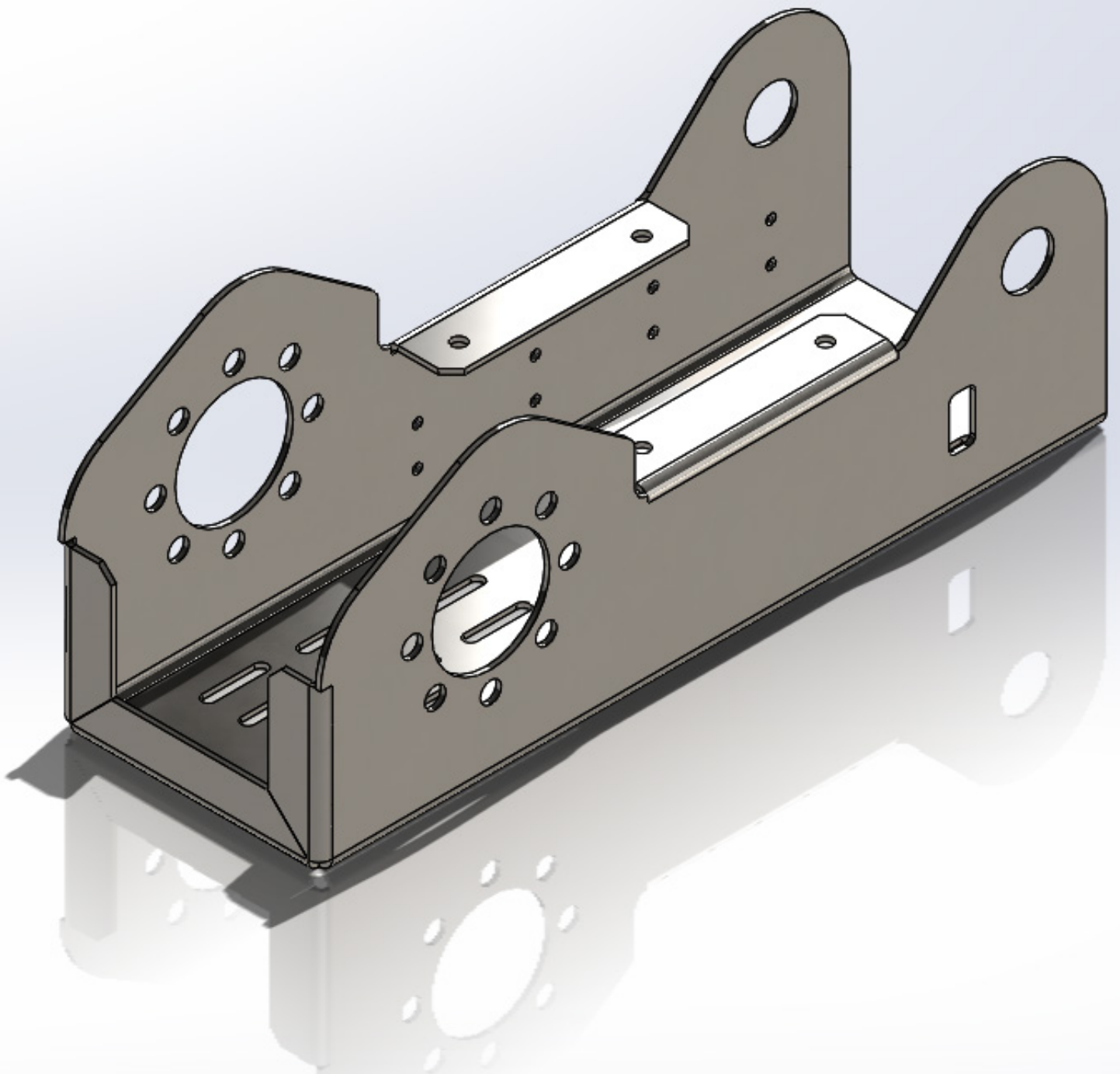


# TopsWorks | Installation Notes

State: 09.03.2023



Dear Customer,

Thank you for choosing TopsWorks. The following installation instructions will help you complete the installation and setup of TopsWorks. Please follow the information below:

- New installation routine
- Important settings for TruTops Boost V14 and higher
- Software to be installed with network or single user license

## New installation routine with TRUMPF TBS module

TopsWorks will be delivered with a new installation routine as of version 2023.

This enables the simultaneous installation of the **TBS module** provided by **TRUMPF**. This is mandatory for the support of **TruTops Boost V14 and higher**.

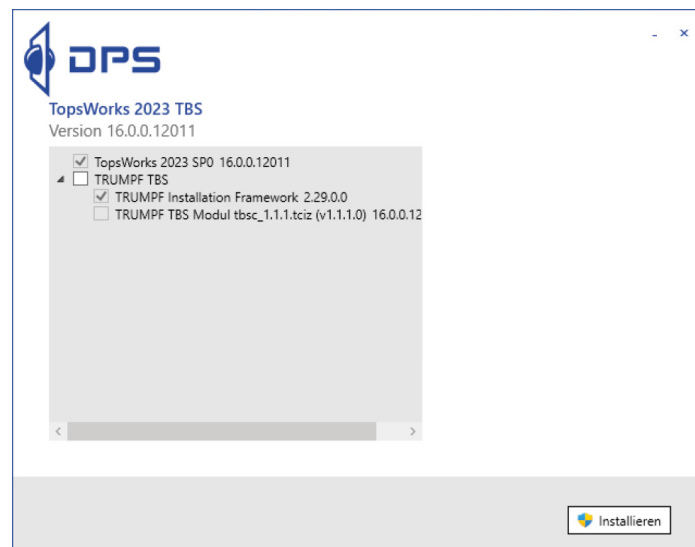


Figure 1

If the TBS module is selected, the program components (TRUMPF Installation Framework, CodeMeter) provided by TRUMPF and required for use and licensing are installed on your PC.

In addition to the TopsWorks license, the TRUMPF TBS module must be licensed from TRUMPF. The product at TRUMPF is called „**TBS Bending Data for CAD Plugin**“.

Please ask your **TRUMPF sales representative** about this.

If you have any questions about entering the TRUMPF license, please contact **TRUMPF support**.

# 1 Necessary settings for the new „TruTops Boost from V14“ production facility

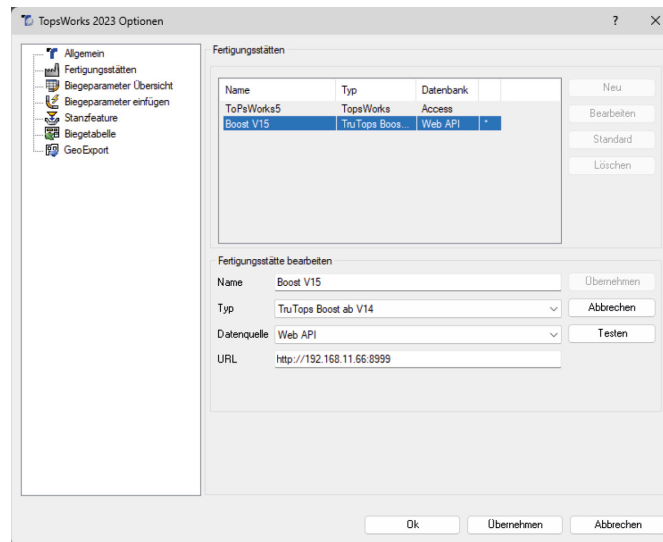


Figure 2

When setting up the „TruTops Boost from V14“ production facility, make sure that you use the correct type and data source (see Figure )!

## 1.1 Automatic selection of the preferred tool variant

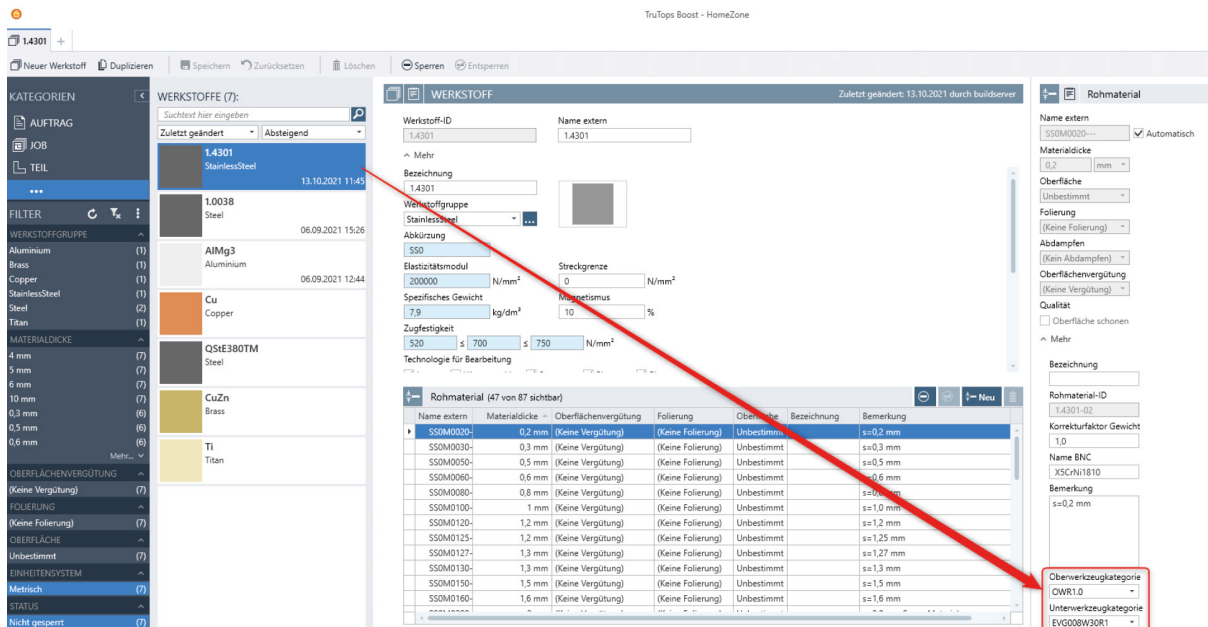


Figure 3

The tool preselection uses the tool categories stored in TruTops Boost. If these are not explicitly defined, TopsWorks cannot perform automatic tool preselection.

You can find the assignment for the individual sheet thicknesses in the Boost under the Material -> Raw material -> Upper tool category or Lower tool category

## 2 Customer-specific shortening values

### 2.1 Customer-specific values in TruTops Boost

If you have any questions on this topic, please contact TRUMPF Support.  
 To enter your own bending parameters in TruTops Boost, please proceed as follows.  
 Open the settings in the HomeZone in Boost (click on the gearwheel at the top right).

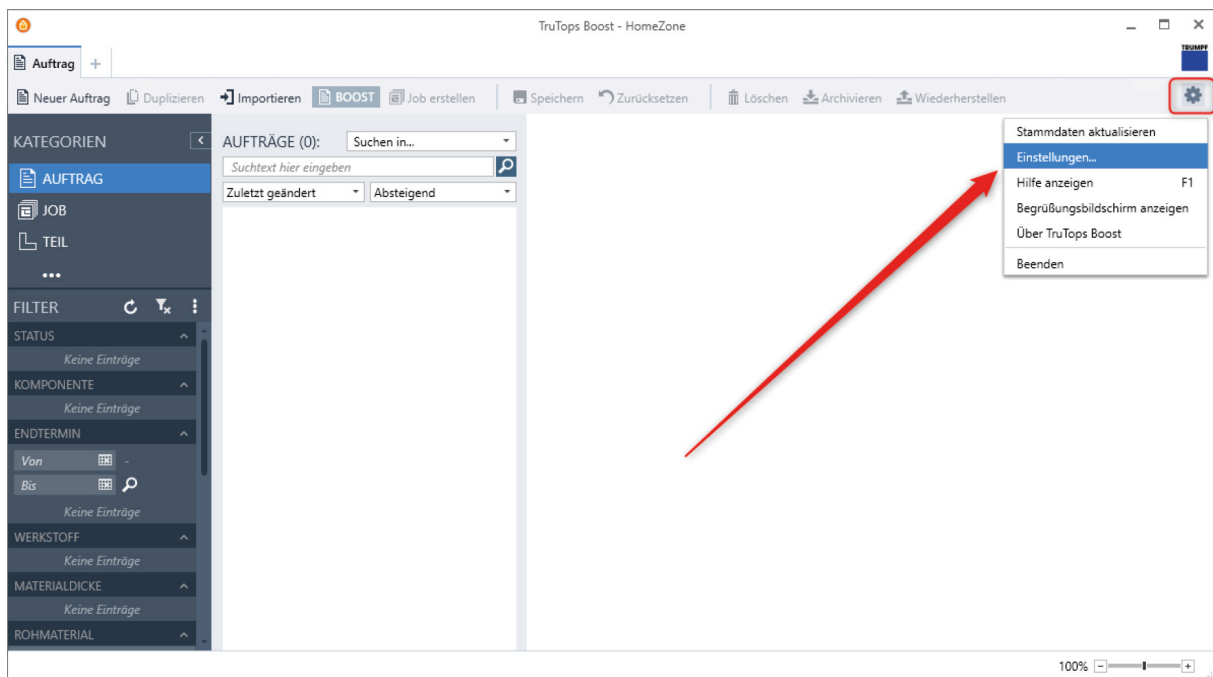


Figure 4

Then press the **Open** button on the **BEND** tab under the **Shortening values** item.  
 The window for entering the customer-specific shortening values opens.

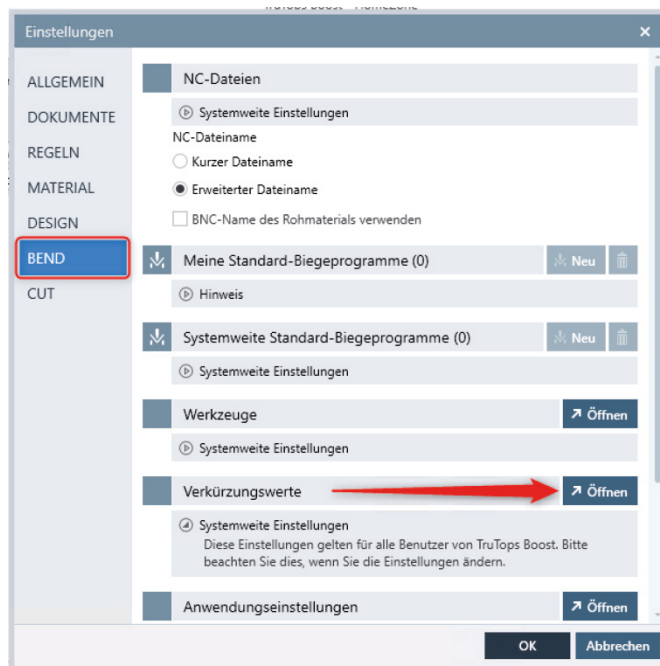


Figure 5

You can now enter your values via the Add button.  
Alternatively, an import option via a CSV file is also available.

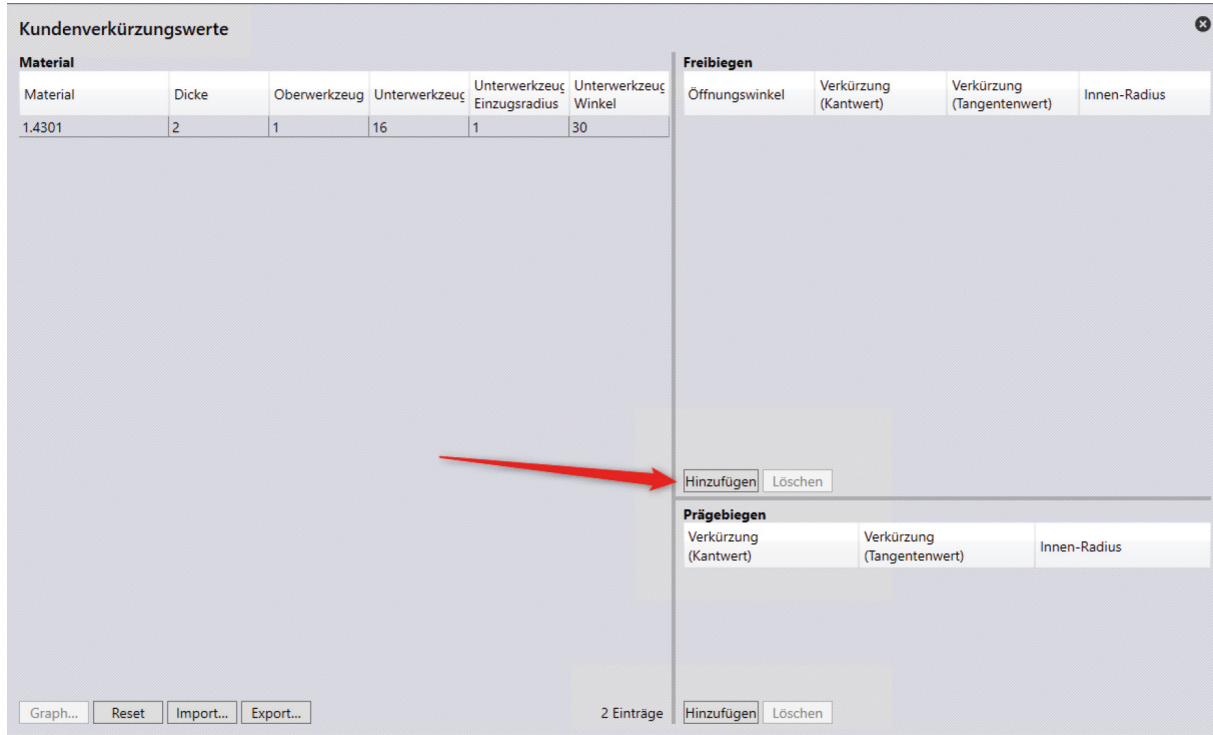


Figure 6

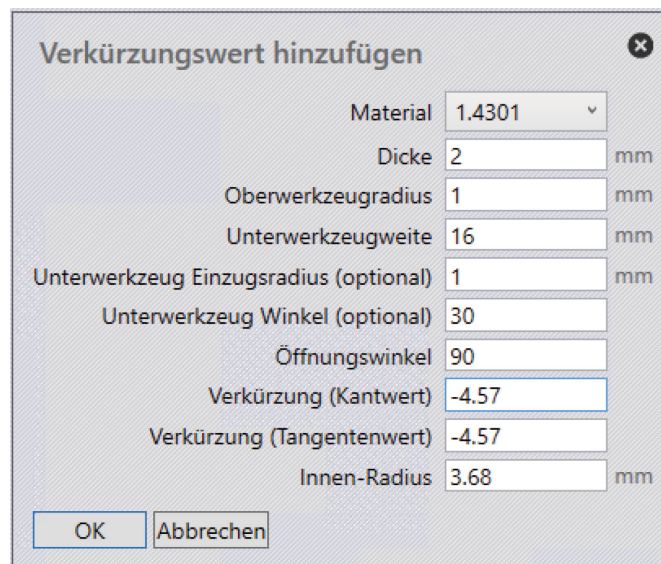


Figure 7

## 2.2 Adjustment with TopsWorks (custom.sdb)

As mentioned above, the custom.sdb file must be synchronized between TruTops Boost and TopsWorks. There are two ways to do this.

### 2.2.1 Transfer the content of the custom.sdb using the TopsWorks Wizard

In the Boost dialog (Figure 6), the customized shortening values can be exported as a CSV file (Export button).

The exported CSV file can be imported again using the TopsWorks Wizard. To do this, go to **File -> TBS CSV Import** in the wizard and follow the dialog.

### 2.2.2 Transferring the custom.sdb file to TopsWorks (advanced)

Bei einer Standardinstallation von TruTops Boost liegt die Datei custom.sdb auf dem Boost Rechner unter: C:\ProgramData\TRUMPF\TruTops\TecZoneBend\System

The custom.sdb file must be copied to the following folder on the TopsWorks machines:

C:\ProgramData\TRUMPF\TopsWorks<TW major version>. *e.g. C:\ProgramData\TRUMPF\TopsWorks15*

Please make sure that SOLIDWORKS is closed during the copy process.

We recommend that this comparison is performed automatically by a logon script when logging on to the PC.

## DPS License Server (for network licenses only)

The DPS license server is an application that enables license administration and manages access permissions for all licenses across a network. The DPS license server must be installed on a PC or server (Windows 2000 or higher). On this license server can be entered the licenses for the DPS products TopsWorks and VarBox. All clients receive their license information from this server.

TopsWorks will withdraw one license of the license server once TopsWorks will be activated as a SOLIDWORKS add-in. As soon as the TopsWorks add-in is disabled, the license will be transferred back to the license server and becomes available again.

The DPS License Server installation package can be downloaded on our website [www.topsworks.com](http://www.topsworks.com) under Support -> Documents.

### Installation and operation of DPS License Server

#### 1. First install the DPS license server:

- a. Install the DPS license server on your server or any other designated computer.
- b. Start the license server (DPS License Server UI) -  
„Start / Programs / DPS Software / License Server / Start DPS License Server“.
- c. Select a different port, if the standard port is already used.
- d. Please enter your TopsWorks network serial number  
(serial number is provided on the delivery slip or by e-mail) and click “Add”.  
The number of used and free licenses can be monitored in the field „State“.

You can find the TopsWorks license code on the delivery note under „ID code“.

You can also find your TopsWorks license codes on the DPS FTP server in the folder „Customer data“ in the file „TopsWorks licenses.csv“.

If you do not have a personal access link to our FTP download area, please contact our technical support.  
Note: Only the network license codes with the initial letter „F“ (stands for floating) are managed with the license server. The single user licenses start with an „E“ and are entered directly when activating the TopsWorks add-in (see page 10).

#### 2. Start the license server service:

- a. Exit the DPS License Server UI without starting the server.
- b. Start the service „DPSLicServer“ with  
„My Computer / Manage / Services and Application / Services“.

## Client-Software Installation



Please note that product updates are only available for customers with active service.

The customers with active service will receive a personal download link from our FTP server. In this download area you will find the latest installation packages as well as all necessary information about the program.

If you have an active service contract, but have not received the download link, please contact our technical support.

1. Download the TopsWorks client installation package from FTP server.  
Add the download link into the Windows Explorer address bar, or use a FTP tool.  
The current version can be found under Public -> TopsWorks.



2. Install the TopsWorks client package on the desired workstation.

If you have any questions regarding entering or re-entering maintenance, contact your TopsWorks reseller.

### Requirements:

Please verify that your systems meet the following requirements before performing the installation of TopsWorks 6:

- System Requirements for TopsWorks are the same as those recommended for SOLIDWORKS: <http://www.solidworks.de/sw/support/SystemRequirements.html>
- Microsoft .NET Framework 2.0 runtime libraries
- Microsoft Internet Explorer Version 8.x or higher (recommend)
- Local administrative rights (for domain users i.e. by using „Run as...“)
- **Compatible SOLIDWORKS Version.** The current compatibility matrix, you will also find on our website.

These two TopsWorks 6 installations are available:

- Standard: Self-extracting setup executable file Setup (recommended for local installation)
- Network image: (recommended for administrative Installation)

You can install TopsWorks 6 in two different ways. Both, the regular installation (Setup.exe) and the unattended installation of msiexec are supported.

### Installation of TopsWorks Add-In:

1. Download the latest TopsWorks installation package from our FTP server.  
Use the FTP link from the above mentioned e-mail.  
Paste this link into the Windows Explorer address bar or use a FTP tool for this.  
The current version can be found under Public -> TopsWorks -> Installation files.  
Older versions can be found in the „Archive“ folder.  
You have two installation files to choose from: German and English.  
This is only the language of the installation wizard.  
The TopsWorks AddIn is available in the following languages:  
German, English and French\* (\*The Help section is not available in French).
2. Close all SOLIDWORKS sessions before the installation.
3. Install the client software on the workstations.  
Both regular and unattended installation via msiexec are supported.



## Regular installation

Please start the installation by right clicking on the executable installer file ToPsWorks6-SPxx.exe and selecting the Run as Administrator option (Windows 7 or Windows Vista only). Then follow the instructions of the installation wizard.

The installation will be performed for „All Users“ and hence can be re-installed, repaired and/or uninstalled through the Add-/Remove Programs control panel by any user.

## Unattended (administrative) installation

The unattended installation is normally run through the command line tool msixec by passing additional arguments intended for the msi package.

Please uncompress the ToPsWorks6-SPxx.zip file in a temporary folder and execute ToPsWorks.msi as required by using msixec.

For compatibility reasons an additional file has been included in the package (ToPsWorks 6 SPX.X.msi) that will be used by the setup process if necessary.

Administrators can install the application by using the additional flag ALLUSERS=1 or ALLUSERS=0 to allow /disallow „All Users“ to re-install, repair and/or uninstall the application.

Setting ALLUSERS=0 does also hide the application from the Add-/Remove Programs control panel list.

## Supported arguments:

„LICENSECODE“, „LICSERVERPORT“ and „LICSERVERADDRESS“ to automatically pass values for license code, network address and port for the license server

Supported parameters for uninstallation are:

„REMOVEDB“ controls whether TopsWorks' own ToPsWorksX.mdb should be removed during uninstallation or not. Use 0 to keep the existing database and 1 (Yes) to remove it. If „REMOVEDB“ is not used, the database is not removed.

## This is a typical command line for an unattended installation (example):

```
msiexec /i ToPsWorks.msi /qn /Lv* C:\temp\tops.log licensecode="E123 XXXX XXX XXXX" INSTALLDIR=" c:\Program Files\DPS Software\TopsWorks X" ALLUSERS=1
```

To not install certain packages when installing, the arguments ADDLOCAL=ALL and REMOVE=Wizard have to append to the command, so an installation without the TopsWorks DataWizard would look like this:

```
msiexec /i ToPsWorks.msi /qn /Lv* C:\temp\tops.log licensecode="E123 XXXX XXX XXXX" INSTALLDIR=" c:\Program Files\DPS Software\TopsWorks X" ALLUSERS=1 ADDLOCAL=ALL REMOVE=Wizard
```

## This is a typical command line for an unattended uninstallation (example):

```
msiexec /uninstall TopsWorks.msi /qn /Lv* C:\temp\tops.log REMOVEDB=1
```

The uninstallation can be performed through the Add-/Remove Programs control panel or by using msiexec /uninstall TopsWorks.msi.

## Load TopsWorks-Add-In

To activate the TopsWorks-Add-In:

1. Start SOLIDWORKS.



After the TopsWorks installation, SOLIDWORKS must be run as an administrator (regardless of having administrator rights on this computer):

Right click on  
SOLIDWORKS Icon -> Properties -> Compatibility ->  
Activate „Run program as administrator“ -> OK

2. Start TopsWorks in SOLIDWORKS  
(accessible via the menu: Extras -> Add-In -> TopsWorks X).  
The window for „license details“ appears.
3. Enter the license data in the „License details“ window:  
For a single user licence please enter your TopsWorks code in the „License information“-window.  
If you have a network license, please enter the IP-address of your server or the computer on which the DPS License server has been installed as well as the Port you provided.
4. Please confirm all entries by clicking OK.

## Product Support

If you need technical support, don't hesitate to contact us by phone, e-mail or contact form on our website:



Phone: +49711-79731088

E-mail: [hotline@dps-software.de](mailto:hotline@dps-software.de)

web [topsworks.de/en/support/](https://topsworks.de/en/support/)

Kind Regards  
DPS Software GmbH